

D/38

Supplement to Acknowledgment and
Notice of Acknowledgment
of Acceptance of R.S. 2477
Right-of-Way Grant

ENT 80033:2008 PG 1 of 39
RANDALL A. COVINGTON
UTAH COUNTY RECORDER
2008 Jul 15 1:01 pm FEE 0.00 BY SS
RECORDED FOR STATE OF UTAH ATTORNEYS GEN

THE STATE OF UTAH

TO ALL WHOM THESE PRESENTS SHALL COME, Greeting:

This Supplement to Acknowledgment and Notice of Acknowledgment and the affidavits attached hereto as Exhibit A supplement and support the Acknowledgment and Notice of Acknowledgment, previously made under Utah Code Sections 72-5-309 through 310 inclusive, as it pertains to the highway located in Utah County known as STARVATION ROAD; County Road Number: B964; State Geographic Information Database (SGID) Road Identification Number: RD250019.

This document supplements and supports the information contained in the document recorded on Feb. 26, 2008 at Ent: 21742:2008, Beg Pg 1. A legal description is attached hereto as Exhibit B.

In Witness Whereof, I, John Harja, the official designee of the Governor of the State of Utah, in conformity to the laws of the State (Utah Code Sections 72-5-308 through 310 inclusive), have caused this Supplement to Acknowledgment and Notice of Acknowledgment to be made.

Signed by my hand in Salt Lake City, Utah, the 3rd day of July, 2008.

By the Governor's Designee



John Harja

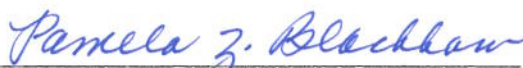
CERTIFICATION

State of Utah)
) : ss
County of Salt Lake)

I hereby certify that the signer of the foregoing document, John Harja, is personally known by me, has made a voluntary signature and taken an oath stating that he is the official designee of the Governor of the State of Utah and is authorized to sign this document on the Governor's behalf pursuant to Utah Code Section 72-5-309. He further vouched that, based upon information and belief, the facts alleged therein are true.

Dated this 3rd day of July, 2008.





Notary Public

Exhibit A

AFFIDAVIT OF CLYDE R. NAYLOR

STARVATION ROAD

UTAH COUNTY, UTAH

COUNTY "B" ROAD NUMBER B 964

STATE OF UTAH)
 :SS
COUNTY OF UTAH)

I, CLYDE R. NAYLOR, being first sworn, deposes and states as follows:

1. I am an adult competent to testify about the matters set forth below based on my personal knowledge.
2. My educational background includes a B.E.S. degree in Civil Engineering and M.S. degree in Structural Engineering, both from Brigham Young University.
3. I am currently a member of the American Public Works Association where I was the past chapter president and a past National Institute for Transportation Executive Council Member, a member of the American Society of Civil Engineers, and a member of the Utah Council of Land Surveyors.
4. I have been the Utah County Surveyor from January 1979 to December 31, 2006, the Utah County Engineer from January 1980 to the present, and the Utah County Public Works Director from January 1991 to the present. During these time periods, I have been personally familiar with Utah County's construction and maintenance activities on county roads, including the "B" road know as the Starvation Road that runs from U. S. Highway 6 at Tucker southerly to the Carbon County line. A map of the road is attached hereto as Exhibit "A".

5. The road is known as Utah County "B" road # B 964. The road is a dirt road located in Township 10 South, Range 6 East and Township 11 South, Range 6 East. The 2.93 miles length of the road, located in Sections 26 and 35 of Township 10 South, Range 6 East and Sections 1 and 12 of Township 11 South, Range 6 East runs across federal property.
6. As the Utah County Surveyor, I have supervised a center line survey of the segments of the Starvation Road believed to be in the ownership of the Bureau of Land Management.

The center line descriptions are as follows:

SEGMENT 3:

Commencing at a point located in the centerline of Starvation Road, said point being located North 10,057.32 feet and East 109.02 feet from the Southeast Corner of Section 35, Township 10 South, Range 6 East, Salt Lake Base and Meridian; thence the following along said centerline: South 33° 06' 24" West 51.96 feet; South 45° 15' 38" West 50.86 feet; South 56° 03' 17" West 49.05 feet; South 44° 39' 30" West 45.19 feet; South 21° 18' 14" West 149.51 feet; South 37° 16' 40" West 52.76 feet; South 49° 05' 57" West 51.85 feet; South 63° 07' 26" West 51.14 feet; South 76° 35' 36" West 168.78 feet; South 59° 50' 54" West 239.37 feet; South 51° 55' 02" West 57.20 feet; South 35° 25' 51" West 311.73 feet; South 20° 17' 28" West 56.95 feet; South 02° 22' 29" West 57.87 feet.

SEGMENT 5:

Commencing at a point located at the centerline of Starvation Road, said point being located North 5456.32 feet and West 586.35 feet from the Southeast Corner of Section

35, Township 10 South, Range 6 East, Salt Lake Base and Meridian; thence the following along said centerline: South 13° 21' 04" East 66.34 feet; South 21° 15' 14" East 74.79 feet; South 41° 14' 49" East 55.25 feet; South 56° 22' 10" East 146.85 feet; South 58° 19' 58" East 109.99 feet; South 35° 57' 07" East 51.11 feet; South 15° 17' 31" East 69.44 feet; South 07° 20' 16" East 79.39 feet; South 02° 08' 07" West 107.67 feet; South 10° 32' 27" West 130.62 feet; South 19° 44' 16" West 132.27 feet; South 26° 22' 30" West 186.21 feet; South 28° 46' 04" West 271.33 feet; South 10° 17' 42" West 67.15 feet; South 01° 43' 47" East 28.45 feet; South 21° 03' 53" East 161.23 feet; South 29° 15' 47" East 71.17 feet; South 21° 44' 16" East 116.09 feet; South 17° 38' 01" East 187.41 feet; South 30° 47' 59" East 235.16 feet; South 32° 43' 57" East 226.73 feet; South 24° 32' 11" East 217.57 feet; South 10° 22' 51" East 533.54 feet.

SEGMENT 7:

Commencing at a point located at the centerline of Starvation Road, said point being located North 113.20 feet and East 710.19 feet from the Southeast Corner of Section 35, Township 10 South, Range 6 East, Salt Lake Base and Meridian; thence the following along said centerline: South 31° 48' 56" West 87.98 feet; South 44° 42' 33" West 53.98 feet; South 57° 18' 40" West 177.06 feet; South 53° 27' 02" West 115.33 feet; South 60° 13' 08" West 65.49 feet; South 67° 13' 05" West 61.83 feet; South 75° 16' 03" West 195.86 feet; South 69° 36' 44" West 139.17 feet; South 58° 18' 28" West 108.95 feet.

SEGMENT 9:

Commencing at a point located at the centerline of Starvation Road, said point being located South 1872.35 feet and West 50.70 feet from the Southeast Corner of Section 35, Township 10 South , Range 6 East, Salt Lake Base and Meridian; thence the following along said centerline: South 37° 38' 45" East 48.34 feet; South 59° 13' 46" East 43.42 feet; North 88° 42' 51" East 48.27 feet; South 78° 34' 18" East 58.61 feet; South 61° 01' 12" East 43.16 feet; South 58° 06' 36" East 237.41 feet; South 51° 04' 05" East 103.54 feet; South 44° 03' 43" East 151.55 feet; South 40° 38' 59" East 119.85 feet; South 36° 56' 16" East 112.81 feet; South 30° 17' 15" East 99.14 feet; South 24° 04' 45" East 203.76 feet; South 17° 25' 40" East 142.41 feet; South 11° 20' 36" East 95.70 feet; South 07° 03' 27" East 162.69 feet; South 00° 22' 17" West, 80.02 feet; South 05° 03' 45" East 139.00 feet; South 28° 22' 42" East, 219.82 feet; South 15° 15' 49" East 105.36 feet; South 10° 47' 21" East 78.55 feet; South 08° 20' 18" East 233.78 feet; South 03° 37' 24" East 302.69 feet; South 11° 56' 29" East 137.15 feet; South 04° 58' 14" East 119.33 feet; South 14° 14' 02" East 73.15 feet; South 26° 34' 07" East 189.82 feet; South 13° 44' 07" East 369.76 feet; South 08° 52' 21" East 134.71 feet; South 05° 08' 10" East 93.79 feet; South 13° 58' 13" East 126.67 feet; South 21° 54' 14" East 46.01 feet; South 28° 36' 20" East 109.99 feet; South 20° 24' 43" East 148.97 feet; South 23° 56' 16" East 84.67 feet; South 30° 29' 33" East 205.97 feet; South 24° 32' 40" East, 102.46 feet; South 15° 09' 43" East 108.26 feet; South 08° 41' 19" East 232.98 feet; South 05° 40' 22" East 203.05

feet; South 15° 32' 59" East 96.00 feet; South 23° 12' 28" East 307.06 feet; South 17° 37' 54" East 77.08 feet; South 07° 49' 33" East 154.01 feet; Thence South 14° 22' 39" East 107.60 feet; South 42° 52' 44" East 33.69 feet; South 56° 57' 51" East 74.18 feet; South 47° 54' 43" East 84.70 feet; South 35° 32' 31" East 60.96 feet; South 45° 00' 00" East 123.45 feet; South 22° 55' 55" East 24.90 feet; South 09° 20' 23" East 51.63 feet; South 17° 17' 47" East 179.37 feet; South 28° 29' 24" East 229.28 feet; South 33° 02' 09" East 52.45 feet; South 16° 26' 25" East 77.65 feet; South 07° 12' 36" East 138.40 feet; South 02° 00' 34" West 226.74 feet; South 02° 19' 40" East 122.35 feet; South 16° 09' 14" East 150.04 feet; South 24° 05' 15" East 92.54 feet; South 40° 26' 57" East 71.96 feet; South 38° 53' 35" East 49.05 feet; South 49° 20' 18" East 84.37 feet; South 59° 30' 24" East 171.41 feet; South 45° 14' 45" East 33.80 feet; South 24° 10' 25" East 39.57 feet; South 08° 30' 12" East 84.63 feet; South 24° 54' 17" East 56.99 feet; South 32° 31' 14" East 164.46 feet; South 28° 45' 42" East 167.55 feet; South 39° 24' 46" East 107.27 feet; South 48° 05' 24" East 113.02 feet; South 29° 53' 06" East 72.87 feet; South 34° 36' 51" East 91.73 feet; South 42° 25' 50" East 398.00 feet; South 35° 19' 20" East 145.83 feet; South 22° 23' 32" East 158.86 feet; South 07° 51' 53" East 212.89 feet; South 16° 11' 44" East 58.10 feet.

7. Pursuant to Utah Code Ann. § 17-23-1 and during the time I served as the Utah County Surveyor, I was the designated record holder for all the surveys and maps made within the county. The records of the Utah County Surveyor show that the road has existed since 1910, and has been utilized and maintained as a county "B" road since that time. The

attached copies of documents taken from the Utah County Surveyor's records identify the roads existence:

- a. The road map of Utah County prepared in 1910 by Frank Wentz, Utah County Surveyor shows the Starvation Road running south from Tucker, which is attached hereto as Exhibit "A1".
- b. The Utah County map revised in 1924 by Ed. B. Jones, Utah County Surveyor shows the Starvation road, which is attached hereto as Exhibit "A2".
- c. The general highway map of Utah County, dated 1955, prepared by the Utah Department of Transportation, shows the Starvation Road as a county road that runs from U. S. Highway 6 at Tucker southerly to the Carbon County line, which is attached hereto as Exhibit "A3".
- d. The general highway map of Utah County, prepared by the Utah State Department of Highways, dated 1975, shows the "B" road as a county road, which is attached hereto as Exhibit "A4".
- e. The United States Government survey map for Tucker, Utah dated 1979, shows the location of the road in Sections 26 and 35 of Township 10 South, Range 6 East and Sections 1 and 12 of Township 11 South, Range 6 East, which is attached hereto as Exhibit "A5".
- f. The general highway map of Utah County prepared by the Utah Department of Transportation, dated 1985, shows the county road, which is attached as Exhibit "A6".

- g. The Road Map of Utah County, Sheet # 16, created November 21, 1995, shows the relationship the road has with the federal property in the area, which is attached as Exhibit "A7".
- h. The official County Road Map of Utah County, Sheet #16, adopted by the Board of County Commissioners on October 30, 1996, shows the road running across the federal properties, which is attached as Exhibit "A8".
- i. The current County Atlas, page 19, titled Scofield Reservoir, shows the Starvation Road as it traverses federal property, which is attached as Exhibit "A9".
- j. The surveyed description for Segment 03 of the Starvation Road has been plotted on an Aerial Photo taken in 1993 to verify the roads existence and is attached as Exhibit "A10".
- k. The surveyed description for Segment 05 of the Starvation Road has been plotted on an Aerial Photo taken in 1993 to verify the roads existence and is attached as Exhibit "A11".
- l. The surveyed description for Segment 07 of the Starvation Road has been plotted on an Aerial Photo taken in 1993 to verify the roads existence and is attached as Exhibit "A12".
- m. The surveyed description for Segment 09 of the Starvation Road has been plotted on an Aerial Photo taken in 1993 to verify the roads existence and is attached as Exhibit "A13".

- 8. At no time during my tenure with the County did it undertake any procedure to abandon or vacate its right-of-way on the road.
- 9. I have had the County records searched for any evidence of reservations on this road and none have been found.

DATED this 8th day of MARCH, 2007

Clyde R. Naylor
CLYDE R. NAYLOR

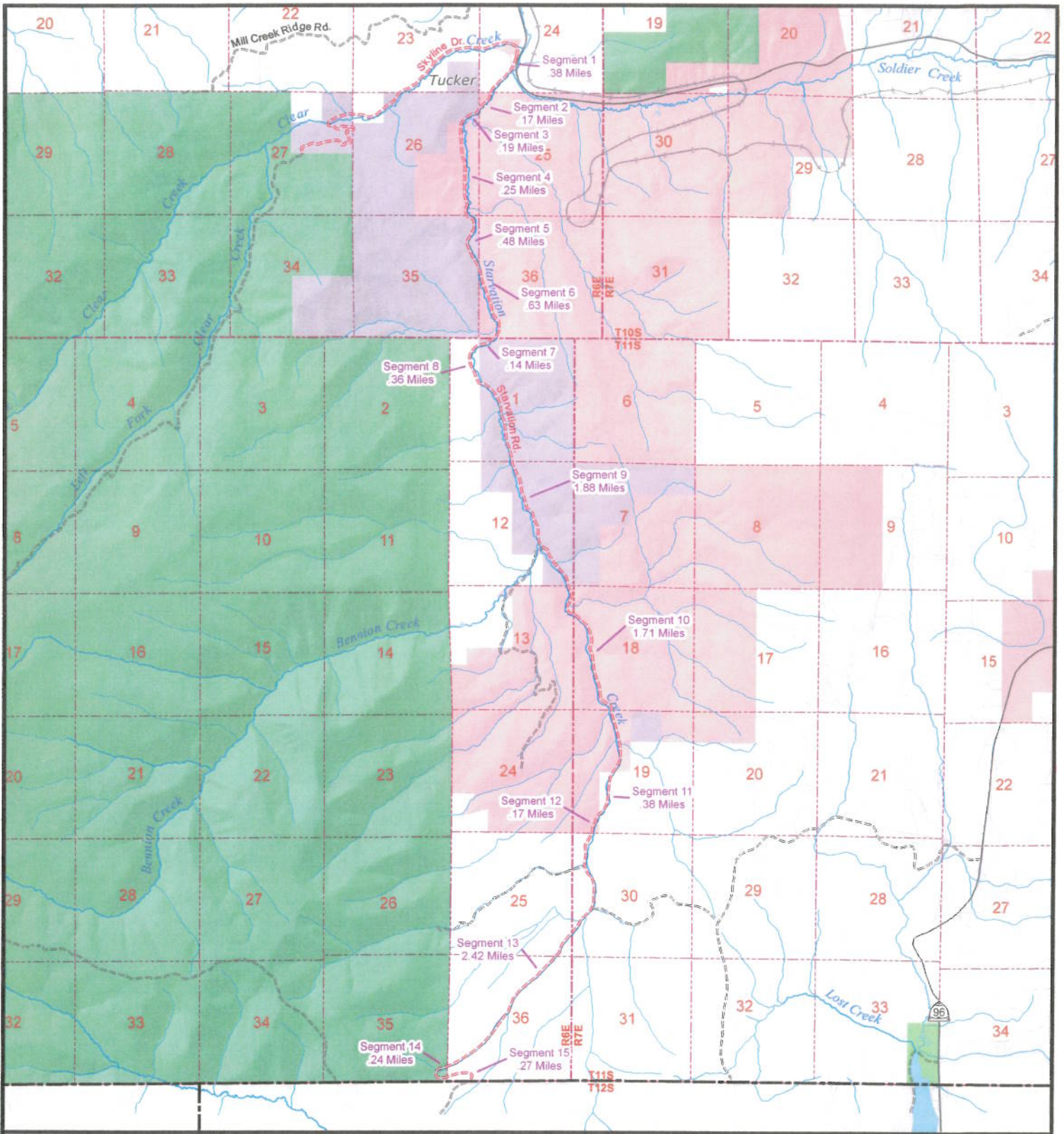
SUBSCRIBED AND SWORN to me, a Notary Public, this 8th day of march, 2007

Regina J. Tanner
Notary Public

Residing in: UTAH

My commission expires: 01-03-2011





RS2477
Starvation Rd.
2.93 Miles

B964
9.67 Miles

Legend

- | | | |
|--|--|---|
| <p>State Roads</p> <ul style="list-style-type: none"> 1-15 US HWY/State Route Other FAE Route <p>Official County Roads</p> <ul style="list-style-type: none"> Paved Unpaved <p>Local Roads</p> <ul style="list-style-type: none"> Paved Dirt Roads Gravel Roads Other Roads Railroads | <p>Public Land</p> <ul style="list-style-type: none"> B.L.M. Lands National Park Service National Forest Military Other Federal Lands State Lands State Park Utah County Property | <p>Public Survey Lines</p> <ul style="list-style-type: none"> Township Lines Section Lines Incorporated Cities |
|--|--|---|



1:69,814
 1 inch equals 5,817.79 feet



Utah County Public Works - Mapping Division
 2855 South State Street
 Provo, UT 84606
 (801) 851-8626
 Printed on August 10, 2006 by maryek

"Exhibit A"

ROADMAP of UTAH COUNTY

SCALE 1 INCH = 200 CHS.

LEGEND.	
Corporate Limits	—
Villages	○
County Seat	◎
Streams	~~~~~
Boundary Lakes	=====
Foot Mountains	
Summit Mountains	
County Roads	=====
County Roads with most Traffic and Travel	=====
Railroads	-----
Co. Line definite	—
Co. Line indefinite	...

CERTIFICATE

I hereby certify this map to be correct

Frank Weitz
Surveyor Utah County.

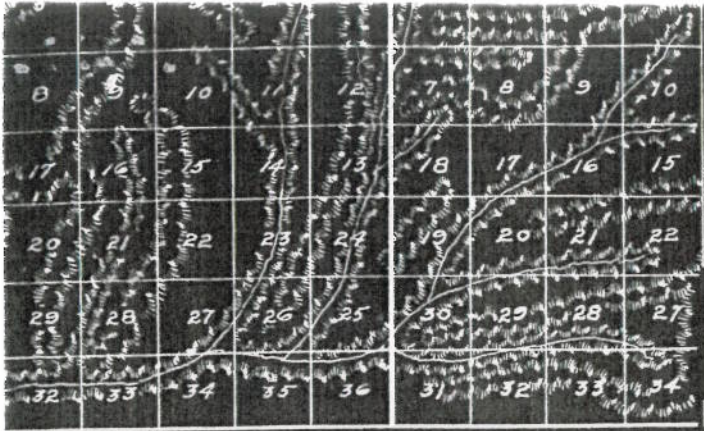
APPROVAL

Approved by the Board of County Commissioners of Utah County this 31st day of January 1910

M. E. Ratchner Jr.
County Clerk.

ENT 80033:2008 PG 12 of 39

EXHIBIT "A1"—MAP TITLE



ENT 80033:2008 PG 13 of 39
EN 80033:2008 PG 14 of 39



EXHIBIT "A1"-MAP

UTAH

ENT 80033:2008 PG 14 of 39



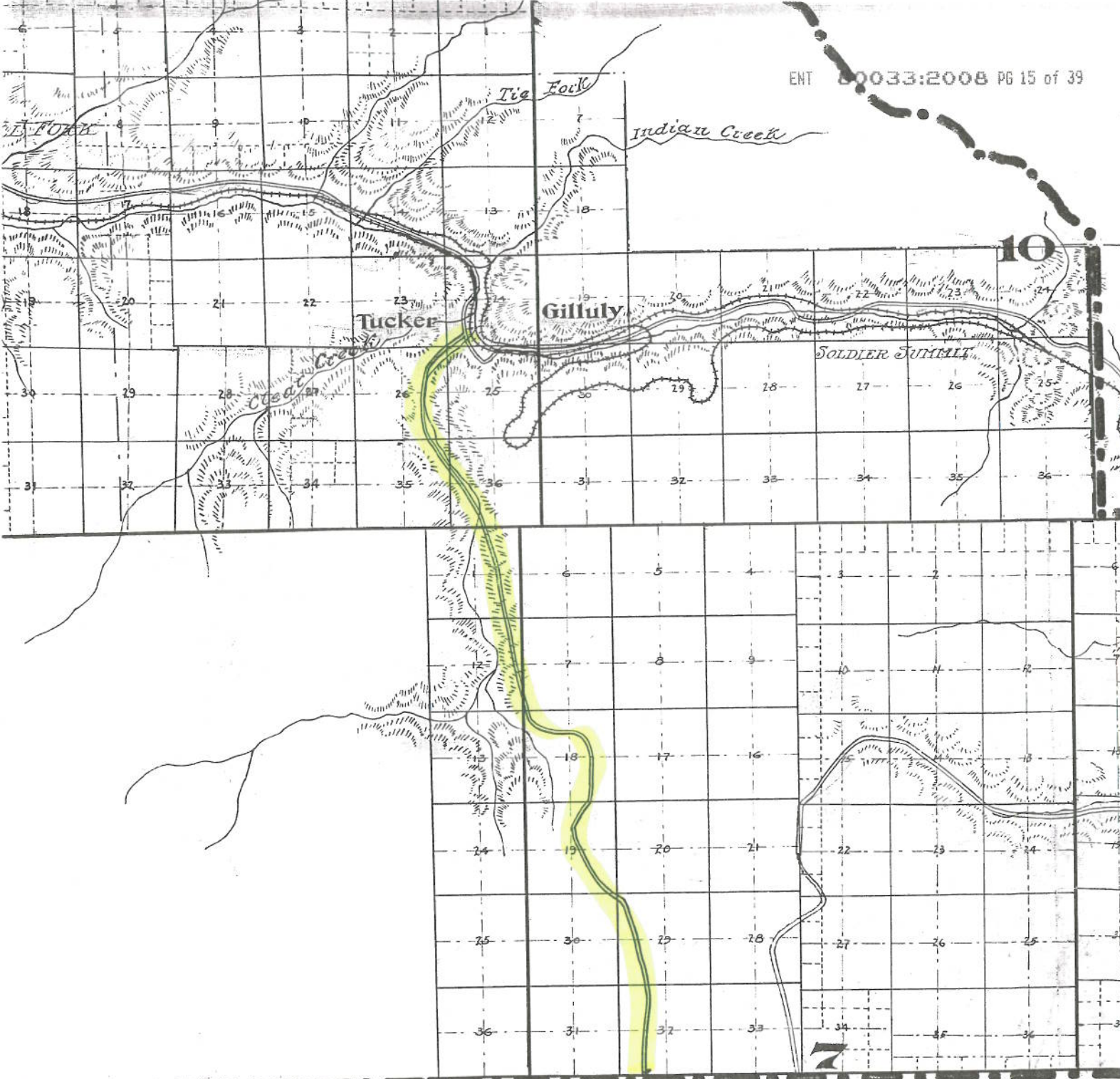
ORIGINAL MAP COMPILED BY C. MITCHELL
REVISED BY Ed. B. JONES - 1924

Provo, Utah.

LEGEND

Definite Boundary	—●—●—●—●—
Indefinite Boundary	—●—●—●—●—
Precinct Boundaries	- - - - -
Forest Reserve Boundaries	- · - · - · - · -
Incorporated Cities	▭
State Roads	==
Other Improved Roads	==
Railroads	—+—+—+—+—
Canals and Streams	~
Paved Roads	—+—+—+—+—

EXHIBIT "A2"—MAP TITLE



C

A

R

EXHIBIT "A2"-MAP

RAILROAD ON STREET OR ROAD	
CULTURAL FEATURES SHOWN OUT OF POSITION	
RAILROAD	
RAILROAD STATION	
RAILROAD CROSSING	
RAILROAD ABOVE	
RAILROAD BELOW	
RAILROAD BRIDGE	
RAILROAD TUNNEL	
STATE LINE	
COUNTY LINE	
URBAN BOUNDARY (FA)	
CORPORATE LIMITS	
NATIONAL FOREST BOUNDARY	
NATIONAL MONUMENTS	
NATIONAL PARKS	
MILITARY RESERVATIONS INDIAN RESERVATIONS	
WIDE STREAM	
NARROW STREAM	
INTERMITTENT STREAM	
IRRIGATION DITCH	
LEVEE OR DIKE	
LEVEE OR DIKE WITH ROAD	
GROUP OF MIXED CULTURAL FEATURES CLOSELY SPACED	
MOUNTAIN RANGE, MESA OR BUTTE	
MILITARY AIRFIELD	
AIRPORT, COMPLETE FACILITIES	
AIRFIELD, LIMITED FACILITIES	
LANDING AREA OR STRIP	
AIRWAY LIGHT BEACON, GENERAL	
AIRPORT, WITH BOUNDARY	
SWAMP LAND	

GRAIN ELEVATOR	
BEEHIVE	
GREENHOUSE	
NURSERY	
OIL OR GAS WELL	
OIL OR GAS FIELD	
OIL TANK	
PUMPING STATION (OIL OR GAS)	
GROUP OF STORAGE TANKS	
PICNIC GROUND	
PLAY GROUND, BALL FIELD, ETC.	
BATHING BEACH OR SWIMMING POOL	
CAMP SITE, NO PERMANENCE	
SCENIC SITE	
TOURIST COURT OR MOTEL	
CAMP OR LODGE, PERMANENT	
SPRING	
GATE HOUSE	
FOREST RANGER STATION	
GUARD STATION (SEASONAL)	
FISH HATCHERY	
GOLF GROUND OR COUNTRY CLUB	
AMUSEMENT PARK OR HALL	
FAIR GROUND, RACE COURSE, SPEEDWAY	
DRIVE-IN THEATRE	
PREHISTORIC RUIN	
GATE ACROSS ROAD	
WELL (WATER)	
WINDMILL	
LAKE, RESERVOIR, OR POND	
LAKE, RESERVOIR, OR POND WITH DAM	
DRY LAKE SUBJECT TO FLOOD	
PROMINENT ELEVATION	
TRIANGULATION STATION	
BENCH MARK	

ENT 80033:2008 PG 16 of 39

GENERAL HIGHWAY MAP

UTAH COUNTY

UTAH

PREPARED BY THE

UTAH STATE ROAD COMMISSION

HIGHWAY PLANNING DEPARTMENT

IN COOPERATION WITH THE

U.S. DEPARTMENT OF COMMERCE

BUREAU OF PUBLIC ROADS

EXHIBIT "A3" - MAP TITLE

1955

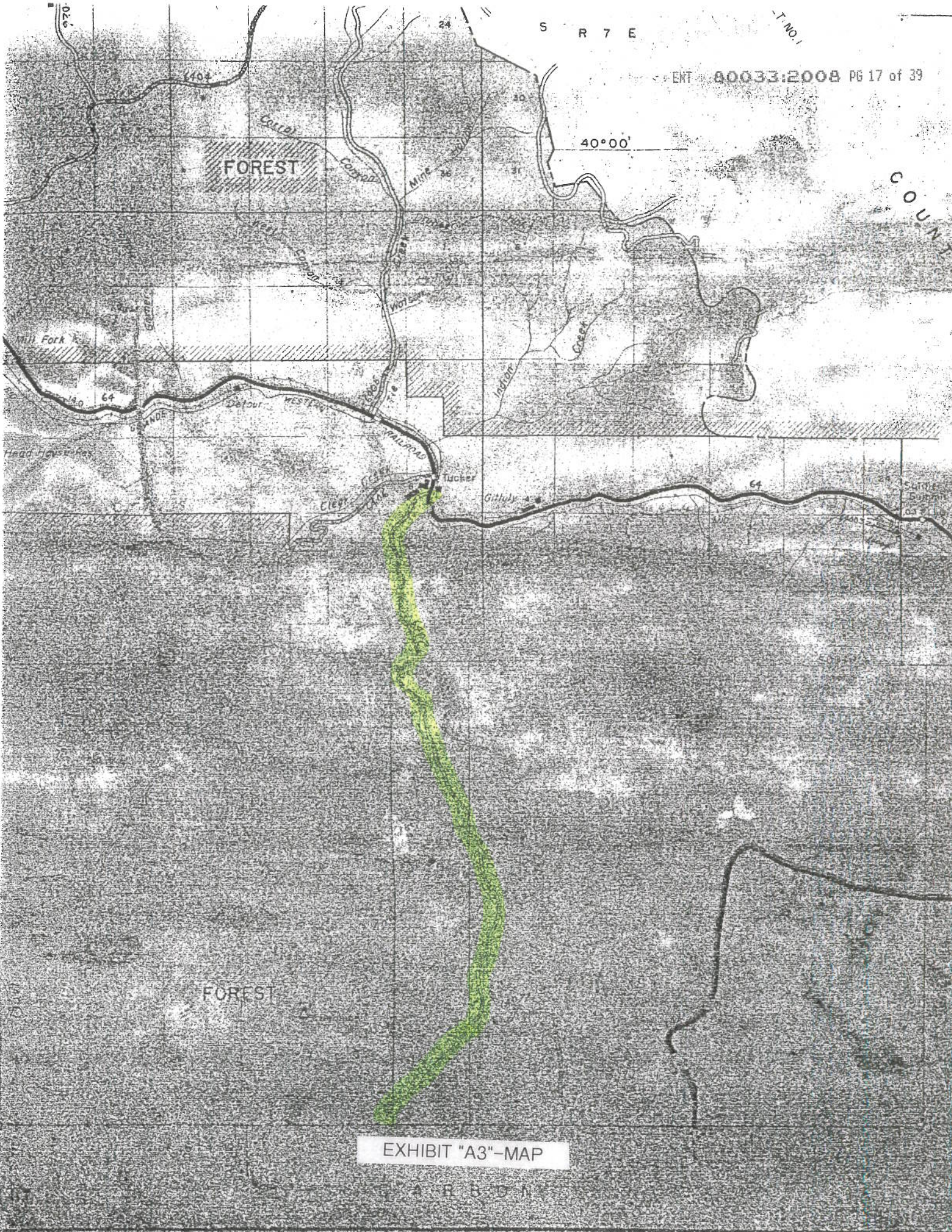
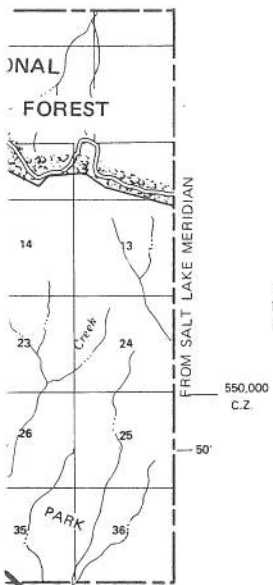
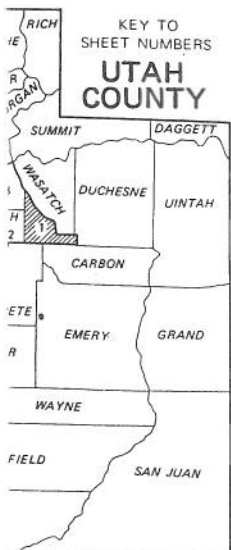


EXHIBIT "A3"-MAP



COUNTY

SHEET NO. 2

T
U
V

DUCHESNE



EXHIBIT "A4"-MAP TITLE

GENERAL HIGHWAY MAP UTAH COUNTY UTAH

PREPARED BY THE
UTAH STATE DEPARTMENT OF HIGHWAYS
SYSTEMS PLANNING DIVISION
PLANNING STATISTICS SECTION

IN COOPERATION WITH THE
U.S. DEPARTMENT OF TRANSPORTATION
FEDERAL HIGHWAY ADMINISTRATION



1975

Reproduction for resale prohibited.

Copies of this map are available for public use at nominal cost.
Utah State Dept. of Highways
Room 612
State Office Building
Salt Lake City, Utah 84114

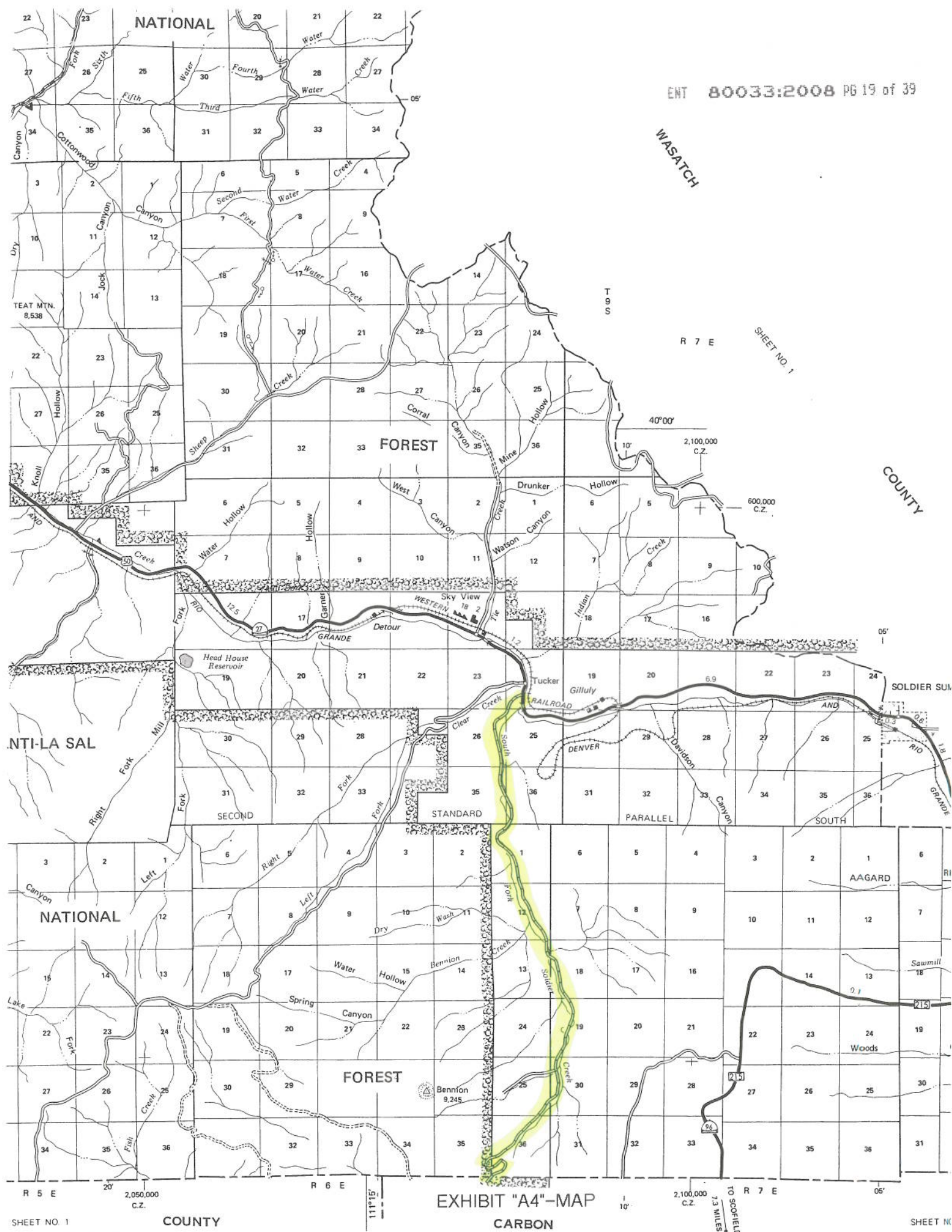
POLYCONIC PROJECTION
50,000 foot grid based on Utah
Coordinate System, Central Zone,
as established by the NOAA.

WASATCH

SHEET NO. 1

R 7 E

COUNTY



TEAT MTN.
8,538

FOREST

T 9 S

40'00"

2,100,000
C.Z.

600,000
C.Z.

ANTI-LA SAL

Head House Reservoir

WESTERN RAILROAD

GRANDE

RAILROAD

SOLDIER SUM

SECOND

STANDARD

PARALLEL

SOUTH

NATIONAL

AAGARD

FOREST

Bennion
9,245

Sawmill

Woods

R 5 E

2,050,000
C.Z.

R 6 E

EXHIBIT "A4"-MAP

2,100,000
C.Z.

R 7 E

05'

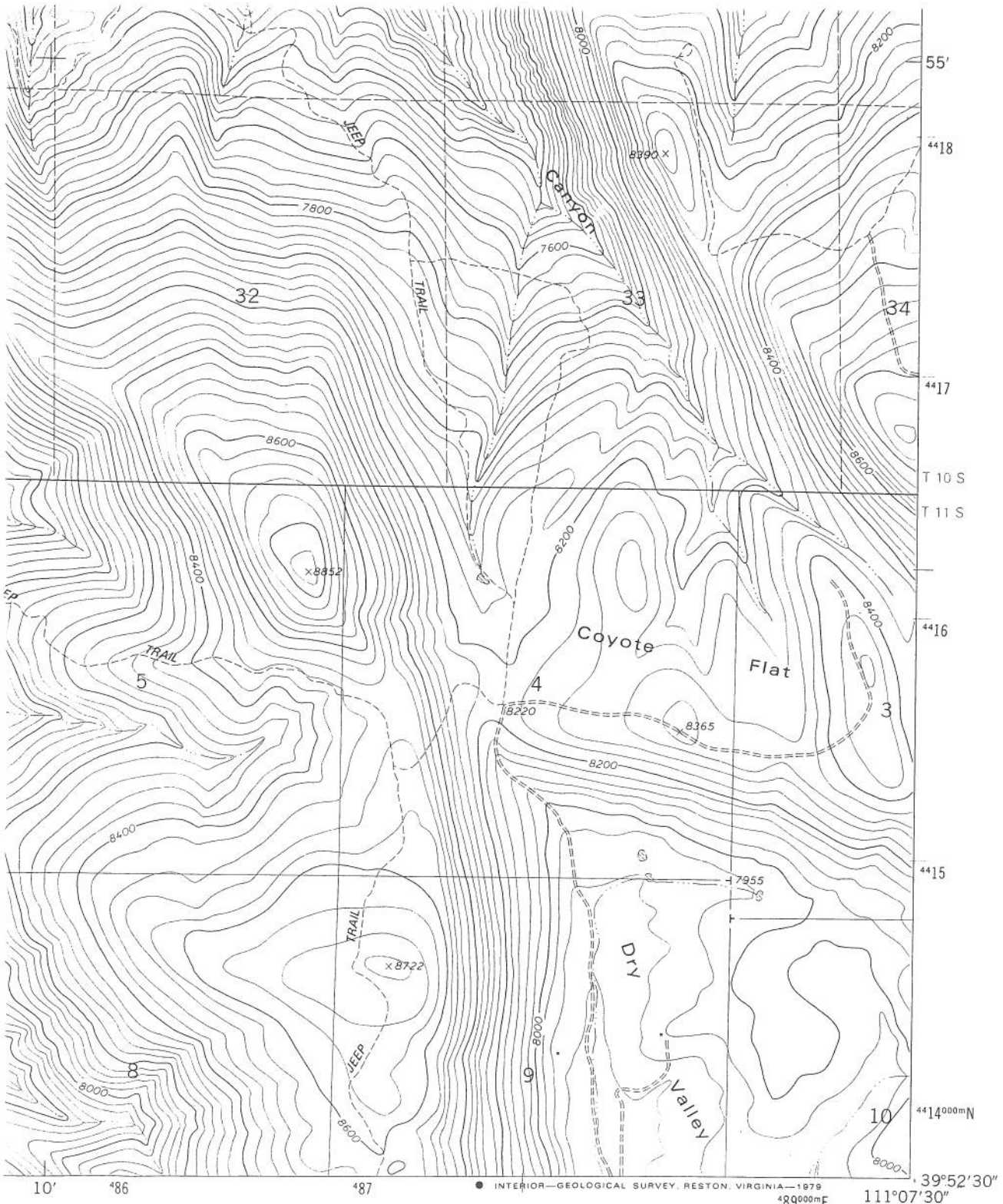
SHEET NO. 1

COUNTY

CARBON

TO SCOFIELD
7.3 MILES

SHEET NO.



● INTERIOR—GEOLOGICAL SURVEY, RESTON, VIRGINIA—1979
 489000mE 111°07'30" 39°52'30" 44°14'00"N

ROAD CLASSIFICATION

- Primary highway, hard surface
- Secondary highway, hard surface
- Light-duty road, hard or improved surface
- Unimproved road
- Interstate Route
- U. S. Route
- State Route

(COLTON)
 3783 1 SE

MILE

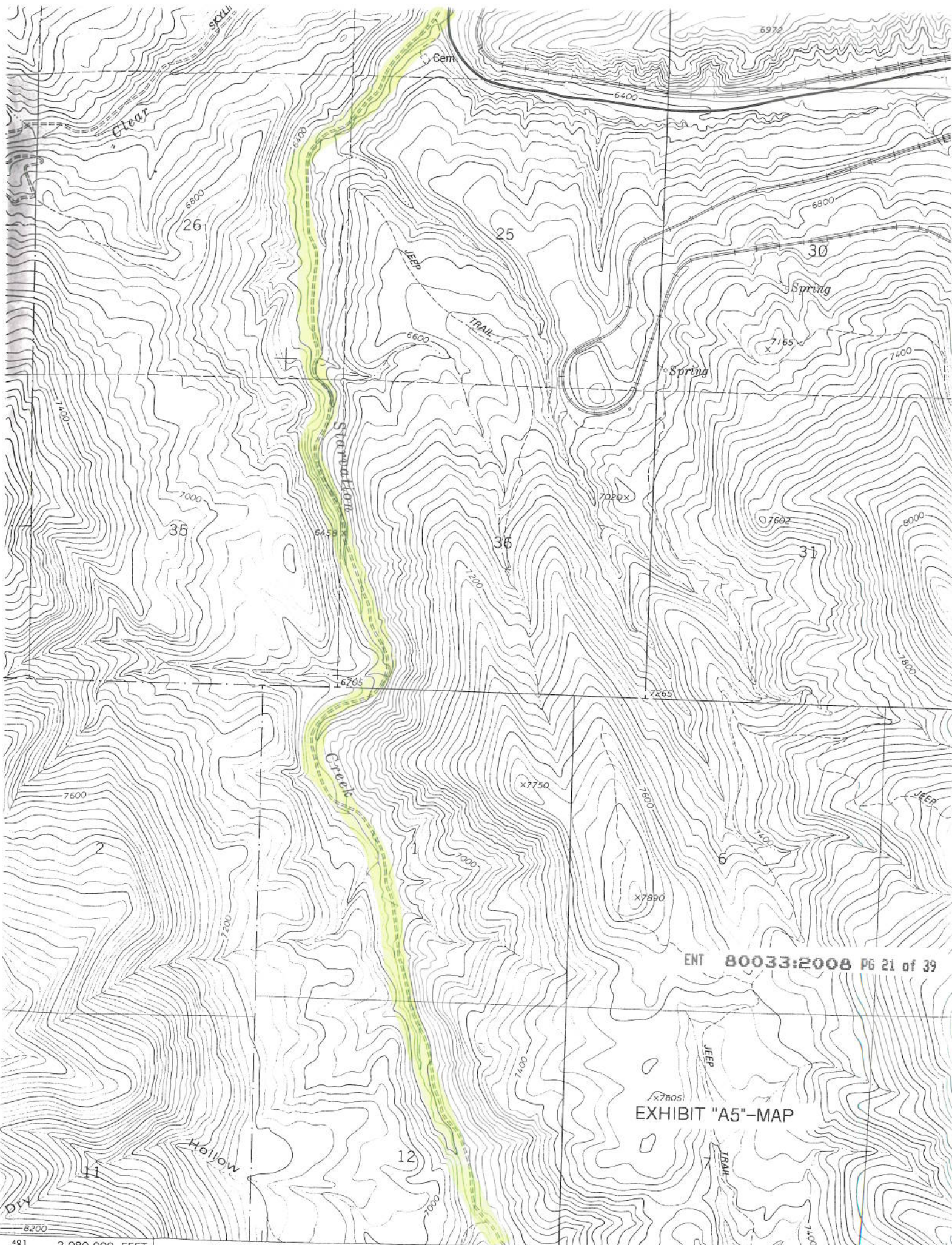


ENT 80033:2008 PG 20 of 39

TUCKER, UTAH

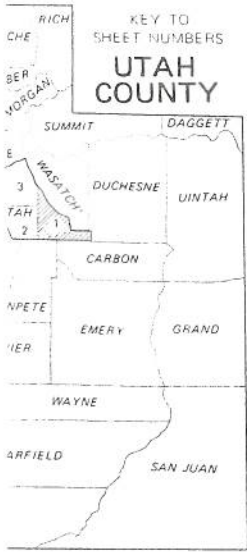
NW/4 SOLDIER SUMMIT 15' QUADRANGLE
 N3952.5—W11107.5/7.5

1979



ENT 80033:2008 PG 21 of 39

EXHIBIT "A5"-MAP



ENT 80033:2008 PG 22 of 39



DUCHESE COUNTY

SHEET NO. 2

T 11 S

550,000 C.Z.

FROM SALT LAKE MERIDIAN

DUCHESE COUNTY



GENERAL HIGHWAY MAP UTAH COUNTY UTAH

PREPARED BY THE
UTAH DEPARTMENT OF TRANSPORTATION
TRANSPORTATION PLANNING DIVISION
PLANNING STATISTICS SECTION

IN COOPERATION WITH THE
U.S. DEPARTMENT OF TRANSPORTATION
FEDERAL HIGHWAY ADMINISTRATION

EXHIBIT "A6"-MAP TITLE



1985

Copies of this map are available
for public use at nominal cost
U D O T
Office of Community Relations
U. D. O. T. - D. P. S. Complex
4501 South 2700 West
Salt Lake City, Utah 84119

POLYCONIC PROJECTION
50,000 foot grid based on Utah
Coordinate System, Central Zone,
as established by the NOAA

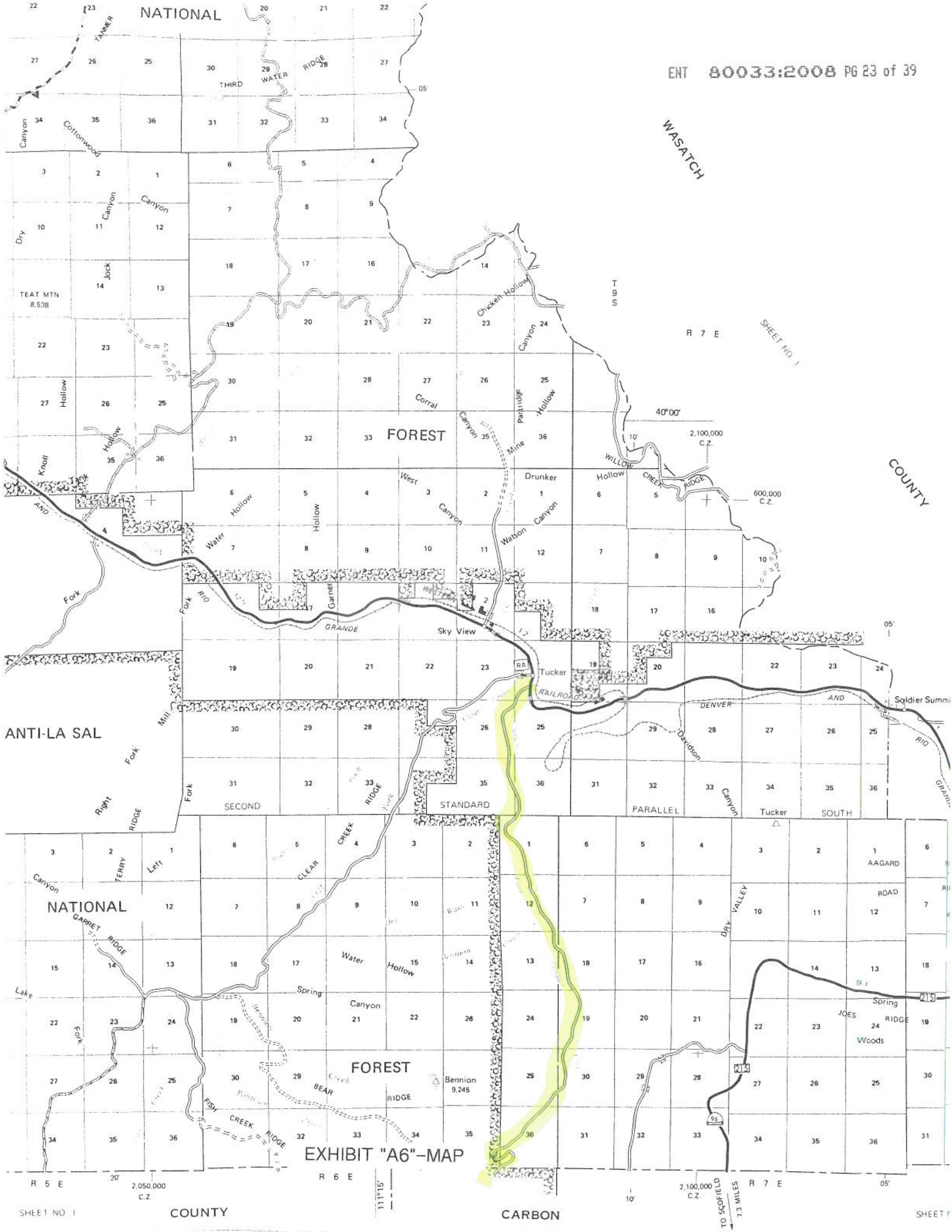
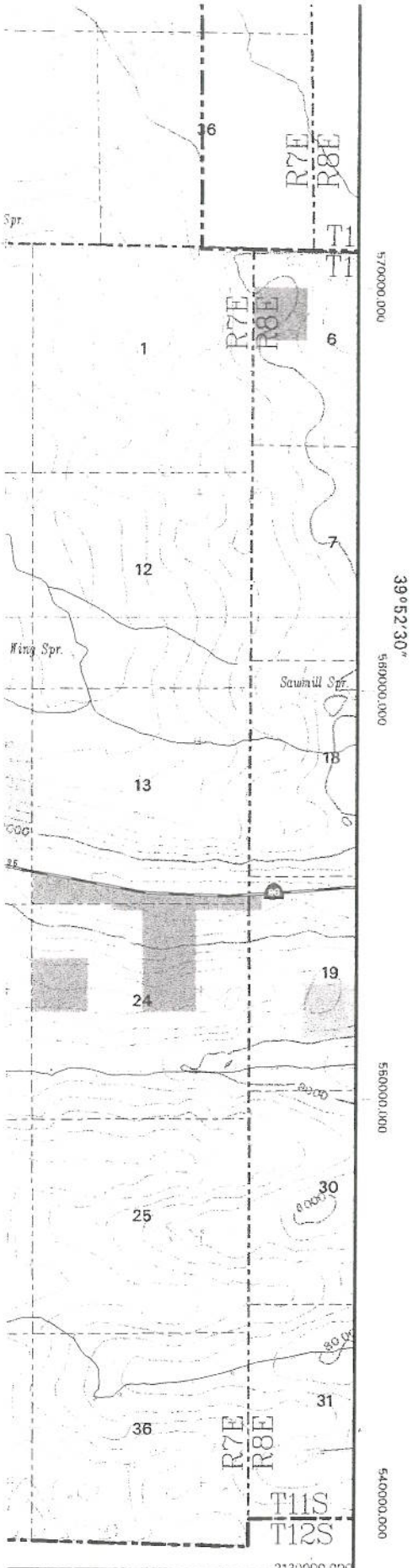


EXHIBIT "A6"-MAP



100 FOOT CONTOURS

Class C roads: City roads
 Class D roads: Public roads which are neither class A, class B, or class C.

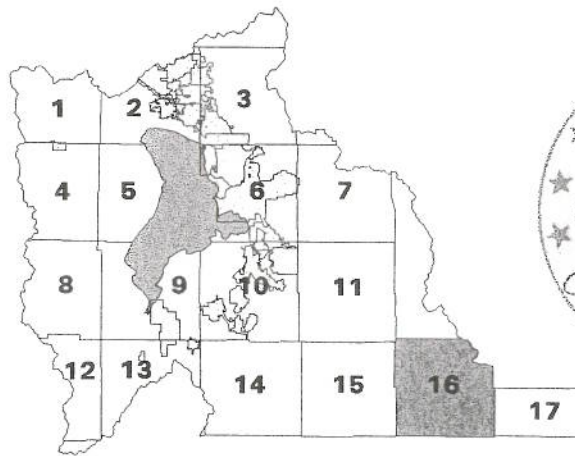
The latitude/longitude tics are based on the NAD83 datum. The state plane coordinate tics are based on the NAD27 datum.

Utah County Geographic Information System
 Utah County Public Works Department, Mapping Division
 2855 South State, Provo, UT 84606, (801)370-8600

Plot Created: November 21, 1995 DBH

ENT 80033:2008 PG 24 of 39

Road Map of Utah County Sheet 16



Index Map

EXHIBIT "A7"-MAP TITLE

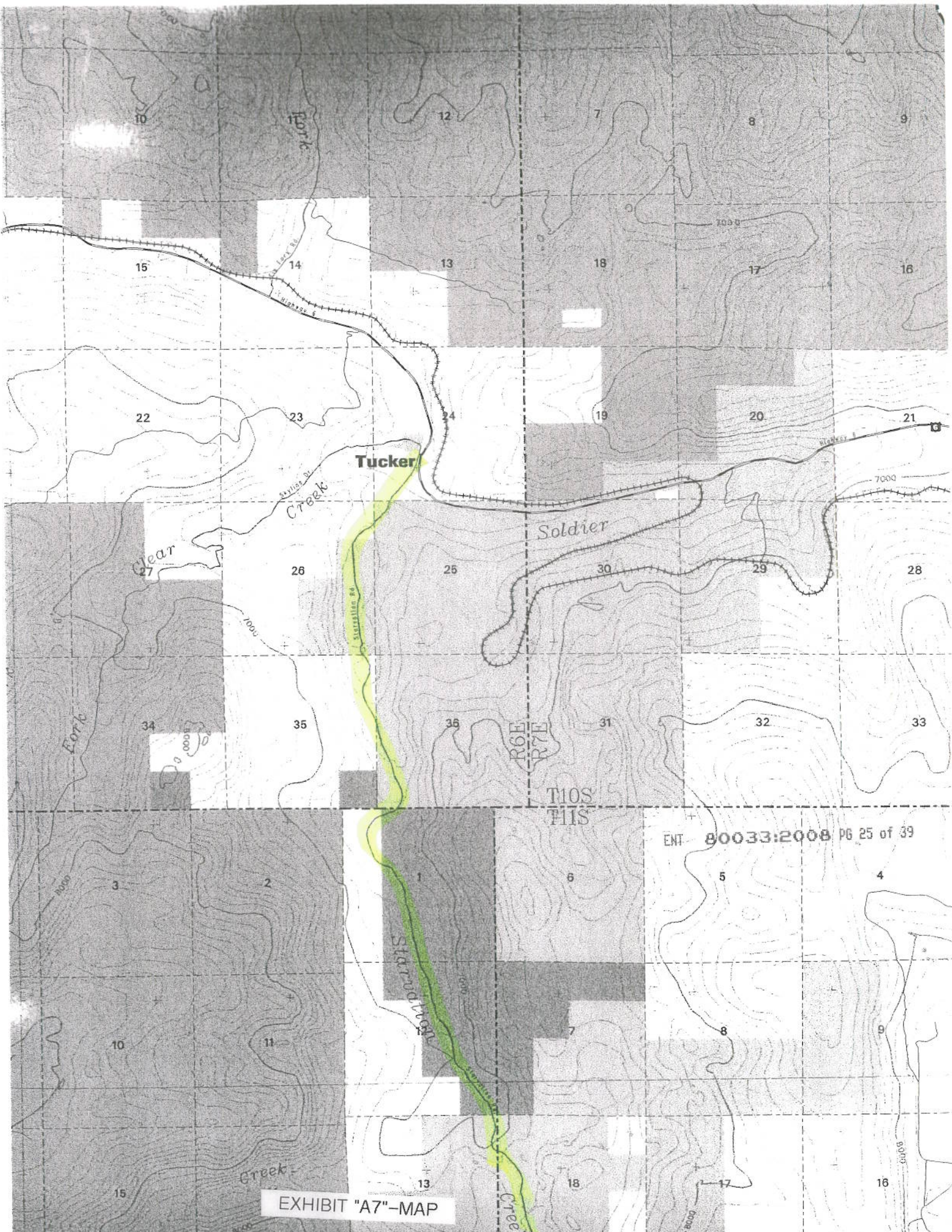


EXHIBIT "A7"-MAP

ENT 80033:2008 PG 25 of 39

Official County Road Map of Utah County Sheet 16

Utah County Geographic Information System
Utah County Public Works Department, Mapping Division
2855 South State, Provo, UT 84606, (801)370-8600

Acceptance by Legislative Body

Adopted by the Board of County
Commissioners this 30 day of OCTOBER, 1996

Chairman: Jerry D. Cooper

Commissioner: [Signature]

Commissioner: Barbara Gilbert

Attest: [Signature]
Title (See Seal): Deputy Clerk

Seal

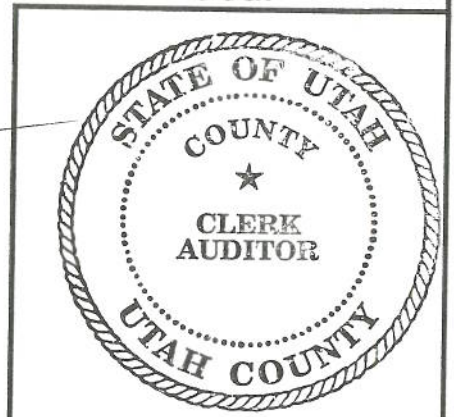
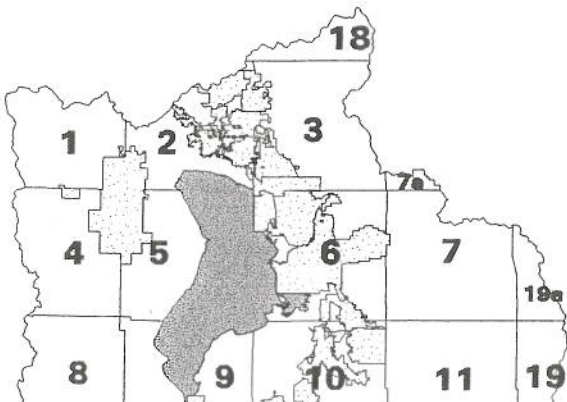


EXHIBIT "A8"-MAP TITLE



T1
T1

F

8

G

7

Spr.

H

18

9

I

J

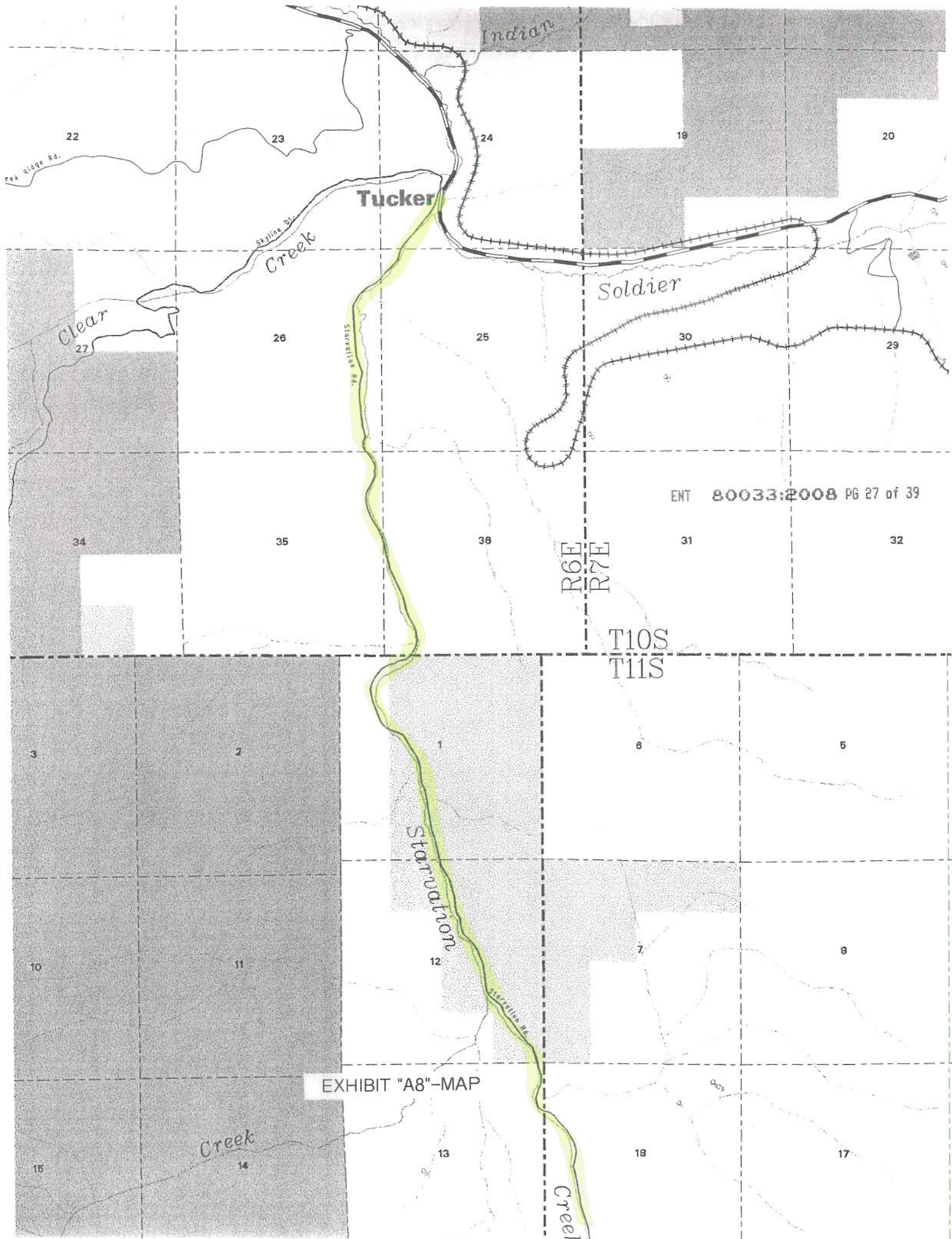
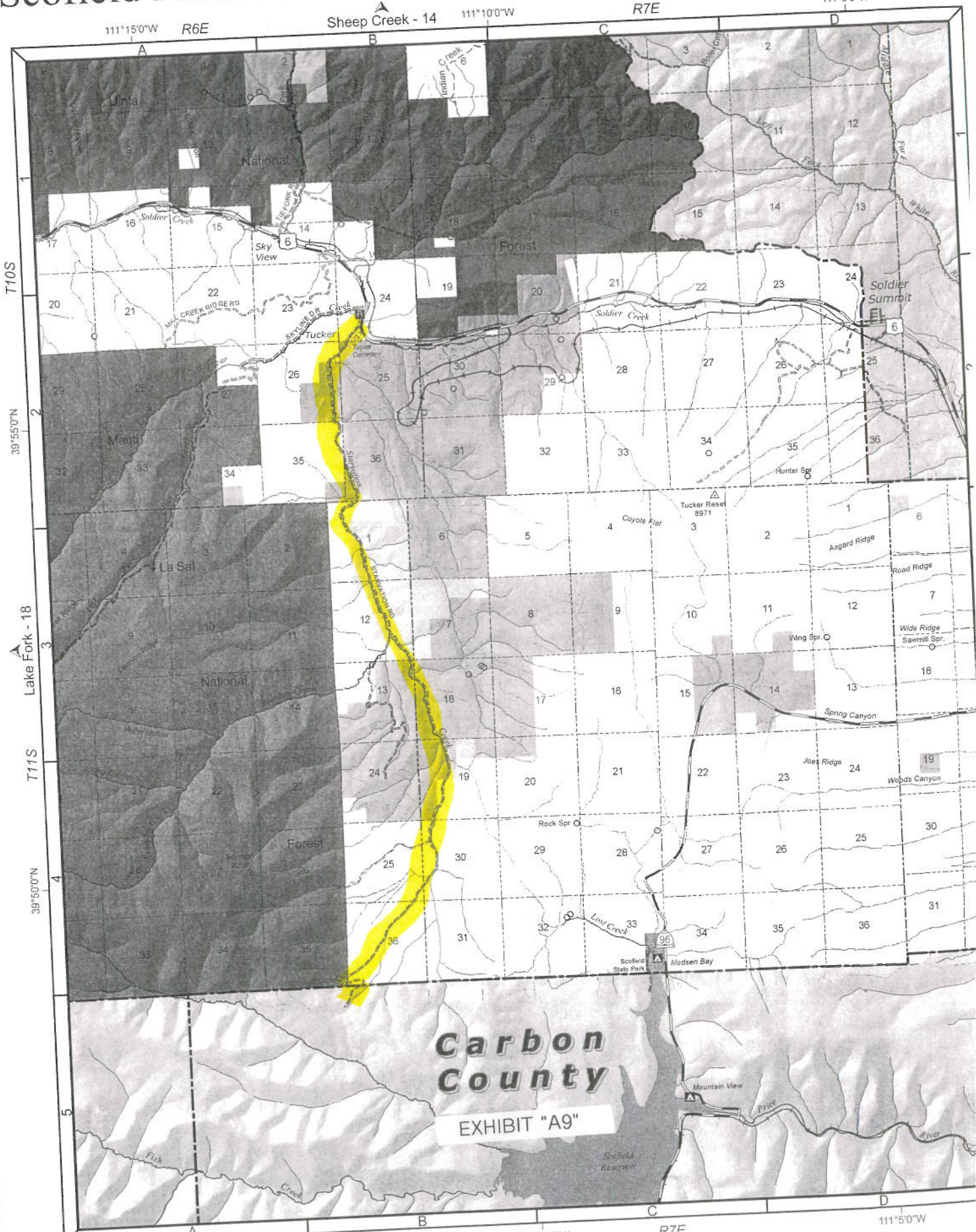
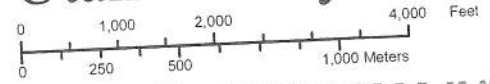
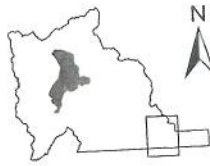


EXHIBIT "A8"-MAP

ENT 80033:2008 PG 27 of 39

Scotfield Reservoir



Carbon County

EXHIBIT "A9"



**RS2477
Starvation Rd.**

**Comparison with Aerial Photo
(See Segment Description)**



1:5,567
1 inch equals 463.93 feet

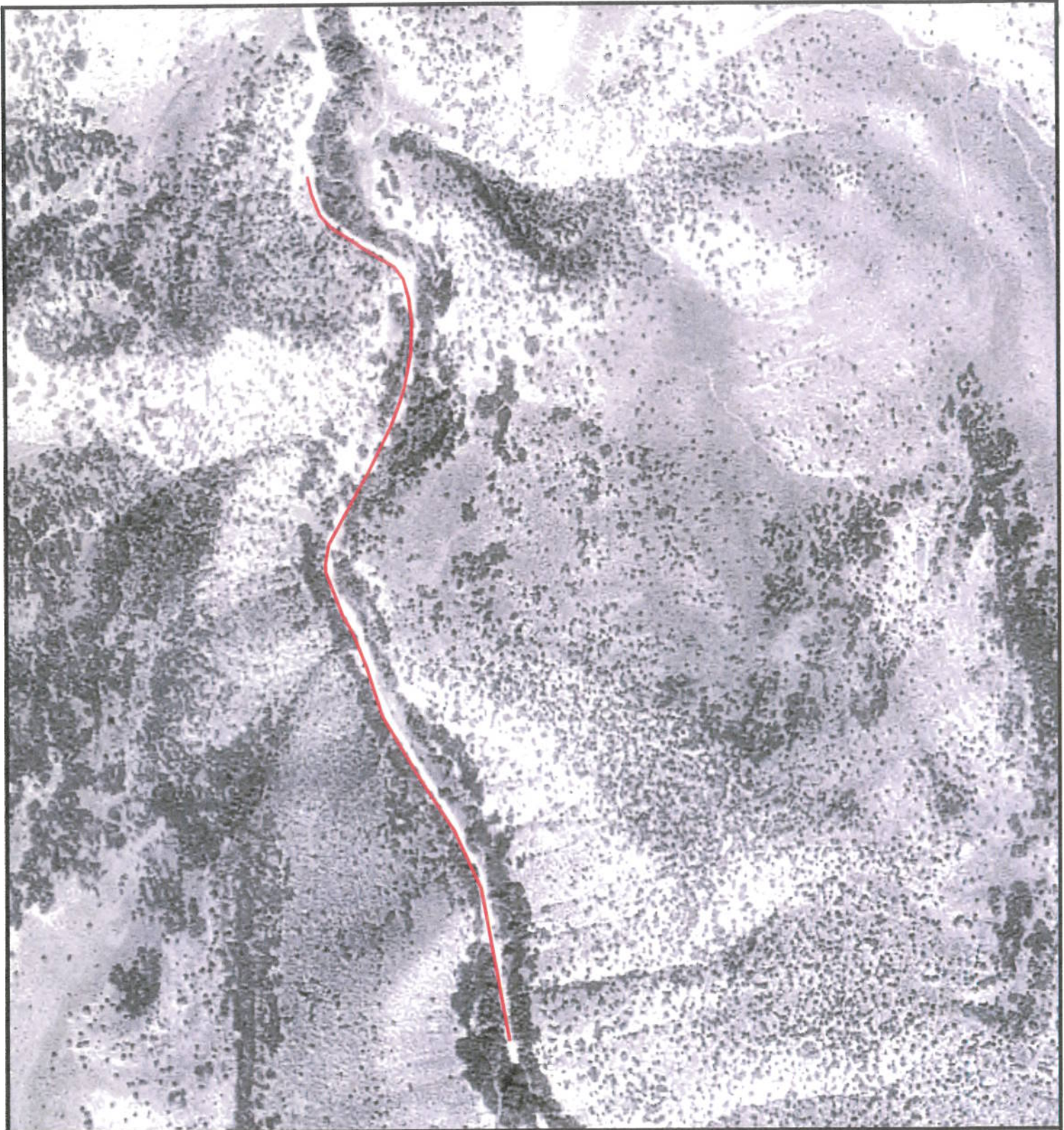
Segment 03

Photo Date 1993

EXHIBIT "A10"



Utah County Public Works - Mapping Division
2855 South State Street
Provo, UT 84606
(801) 851-8628
Printed on October 16, 2006 by maryek



**RS2477
Starvation Rd.**

**Comparison with Aerial Photo
(See Segment Description)**



1:5,567
1 inch equals 463.93 feet

Segment 05

Photo Date 1993

EXHIBIT "A11"



Utah County Public Works - Mapping Division
2855 South State Street
Provo, UT 84606
(801) 851-8626
Printed on October 16, 2006 by maryek



**RS2477
Starvation Rd.**

**Comparison with Aerial Photo
(See Segment Description)**



1:3,500
1 inch equals 291.67 feet

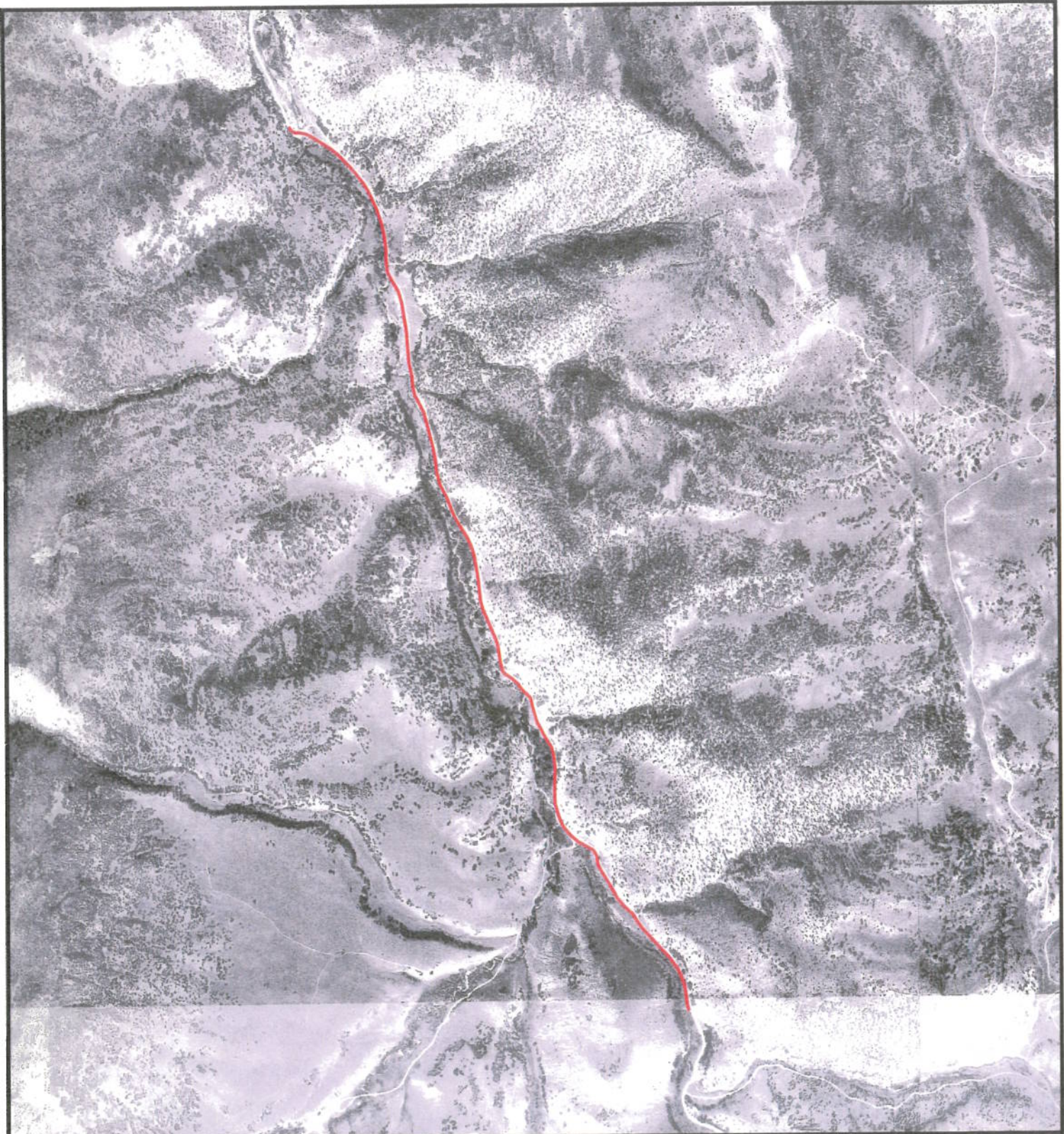
Segment 07

Photo Date 1993

EXHIBIT "A12"



Utah County Public Works - Mapping Division
2855 South State Street
Provo, UT 84606
(801) 851-8626
Printed on October 16, 2006 by maryek



**RS2477
Starvation Rd.**

**Comparison with Aerial Photo
(See Segment Description)**



1:16,150
1 inch equals 1,345.84 feet

Segment 09

Photo Date 1993

EXHIBIT "A13"



Utah County Public Works - Mapping Division
2855 South State Street
Provo, UT 84606
(801) 851-8628
Printed on October 16, 2006 by maryek

STARVATION ROAD

STATE OF UTAH)
 :ss
COUNTY OF UTAH)

I, ROBERT CURTIS BEVERLY, being first duly sworn, deposes and states as follows:

1. I am an adult competent to testify about the matters set forth below based on my personal knowledge.
2. From 1958 to 1988 I was employed with Utah County in the Roads Department where I was an operator/truck driver, supervisor over bridges and culverts, and worked in maintenance and oiling of roads. During that time period, I was personally familiar with Utah County's construction and maintenance activities on county roads, including the road known as Starvation Road that runs from U.S. Highway 6 and runs parallel with Starvation Creek. A map of the road is attached hereto as Exhibit "A".
3. Utah County has performed the following maintenance activities on the road during my employment with the County: graveled and graded the road and performed other general maintenance on the road.
4. All acts of the County regarding this road were, to my knowledge, consistent with its status as a public highway.
5. It is the reputation in the community that this road was used by the public since at least as early as 1958.
6. At no time during my employment with the County undertake any procedure to abandon or vacate its right-of-way on the road.
7. Uses of the road since before 1966 and before any federal reservation included, but were not


limited to, recreation activities, but was also the main route to Skyline Drive which accesses the country.

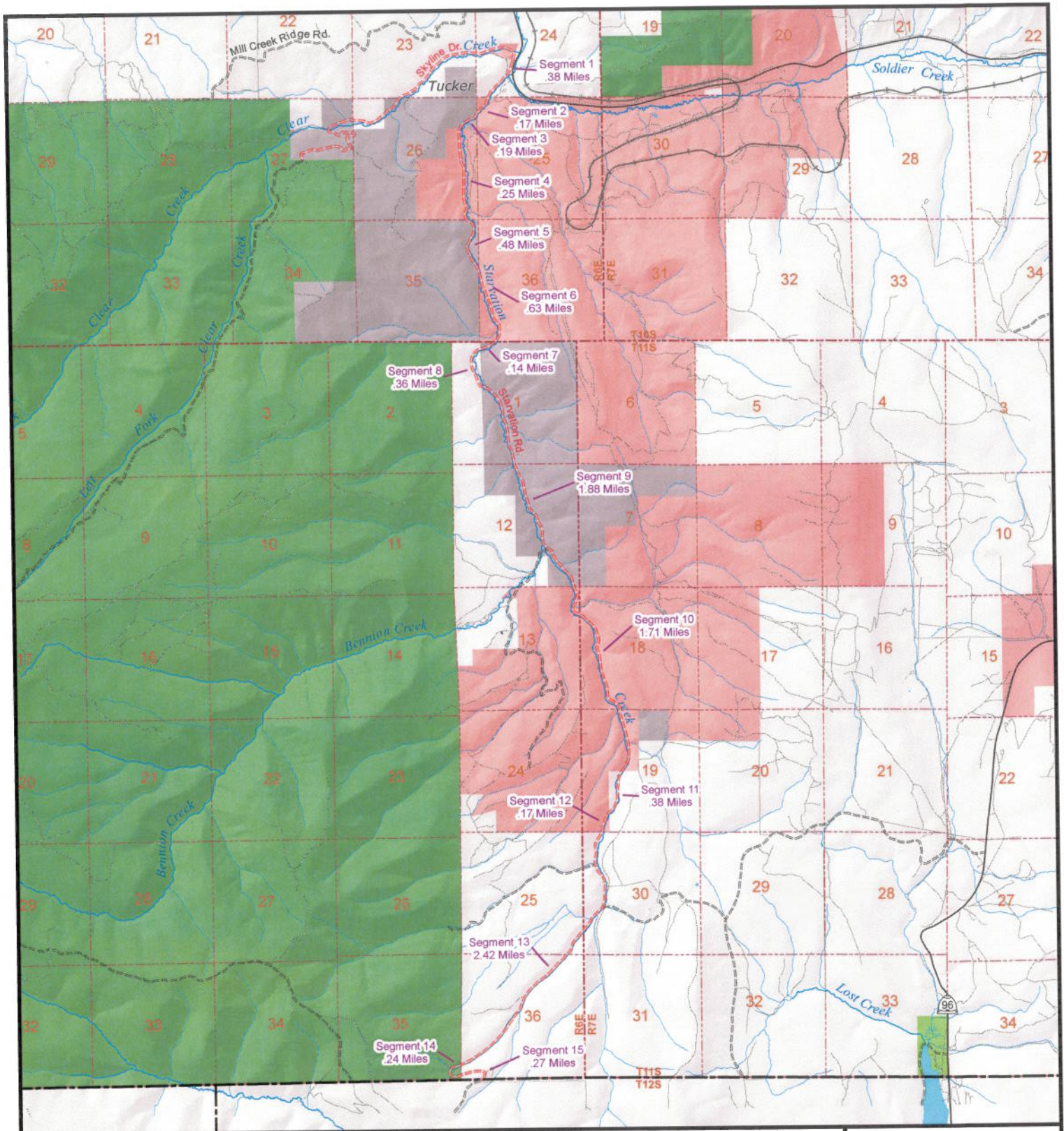
DATED this 11 day of JUNE, 2007.


ROBERT CURTIS BEVERLY

SUBSCRIBED AND SWORN to me, a Notary Public, this 11 day of JUNE, 2007.




Notary Public



RS2477
Starvation Rd.
2.93 Miles

B964
9.67 Miles

Legend		
State Roads	Public Land	Public Survey Lines
I-15	B.L.M. Lands	Township Lines
US HWY/State Route	National Park Service	Section Lines
Other FAE Route	National Forest	Incorporated Cities
Official County Roads	Military	
Paved	Other Federal Lands	
Unpaved	State Lands	
Local Roads	State Park	
Paved	Utah County Property	
Dirt Roads		
Gravel Roads		
Other Roads		
Railroads		



Utah County Public Works - Mapping Division
 2855 South State Street
 Provo, UT 84606
 (801) 851-8626
 Printed on August 10, 2006 by maryek

"Exhibit A"

STARVATION ROAD

STATE OF UTAH)
 :SS
COUNTY OF UTAH)

I, BYRON L. ORTON, being first duly sworn, deposes and states as follows:

1. I am an adult competent to testify about the matters set forth below based on my personal knowledge.
2. From 1947 to 1965 I was employed with the Utah Department of Transportation in District 6 where I was a truck operator, a foreman, and a supervisor. From 1965 to 1985 I was employed with Utah County in the Roads Department where I was an assistant supervisor and supervisor over the Roads Department. During that time period, I was personally familiar with Utah County's construction and maintenance activities on county roads, including the road known as Starvation Road that runs from U.S. Highway 6 and runs parallel with Starvation Creek. A map of the road is attached hereto as Exhibit "A".
3. Utah County has performed the following maintenance activities on the road during my employment with the County: graded the road and performed other general maintenance.
4. All acts of the County regarding this road were, to my knowledge, consistent with its status as a public highway.
5. It is the reputation in the community that this road was used by the public since at least as early as 1947.
6. At no time during my employment with the County undertake any procedure to abandon or vacate its right-of-way on the road.
7. Uses of the road since before 1966 and before any federal reservation included, but were not

limited to, shepherding, ranching, and recreational activities.

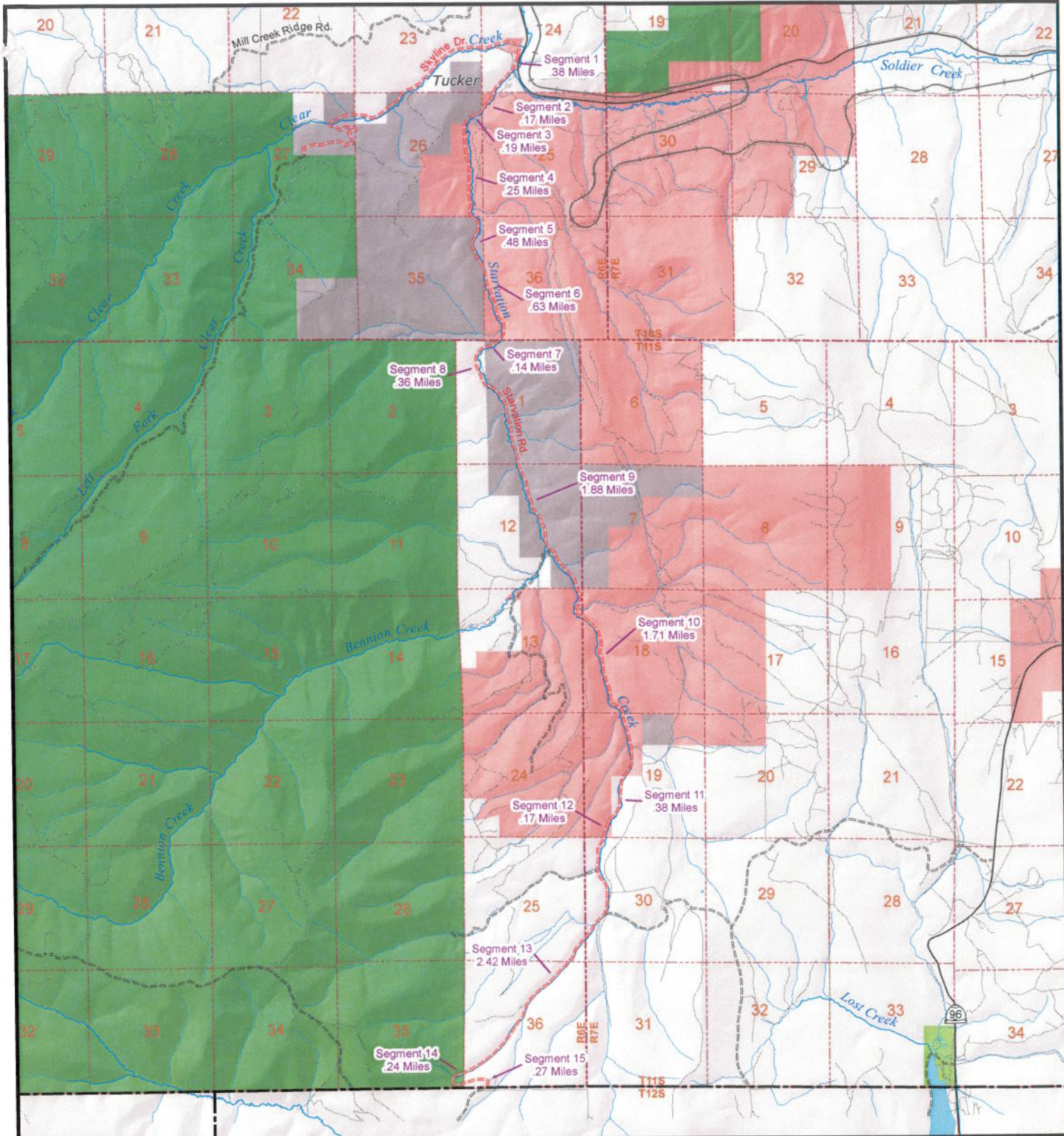
DATED this 17 day of MAY, 2007.

Byron L. Orton
BYRON L. ORTON

SUBSCRIBED AND SWORN to me, a Notary Public, this 17 day of MAY, 2007.

Regina J. Tanner
Notary Public





RS2477
Starvation Rd.
2.93 Miles

B964
9.67 Miles

Legend		
State Roads	B. L. M. Lands	Public Survey Lines
I-15	National Park Service	Township Lines
US HWY/State Route	National Forest	Section Lines
Other FAE Route	Military	Incorporated Cities
Official County Roads	Other Federal Lands	
Paved	State Lands	
Unpaved	State Park	
Local Roads	Utah County Property	
Paved		
Dirt Roads		
Gravel Roads		
Other Roads		
Railroads		



1:69,814
 1 inch equals 5,817.79 feet



Utah County Public Works - Mapping Division
 2855 South State Street
 Provo, UT 84606
 (801) 851-9626
 Printed on August 10, 2006 by maryek

"Exhibit A"

Beginning & Ending Points and Township, Range, and Section References For:**Popular Name: STARVATION ROAD****County: Utah****County Road Number: B964****State Geographic Information Database (SGID) Road Identification Number: RD250019.****Total Road Length: 10.16 miles more or less.**

Beginning at a point on the road centerline located at 39 degrees 48 minutes 48.16 seconds North Latitude and -111 degrees 12 minutes 25.03 seconds West Longitude, which can be converted to mapping accuracy State Plane Utah Central Zone NAD 83 feet coordinates of X = 1,722,732.0 feet and Y = 7,100,882.2 feet based on the US Survey Foot conversion.

Ending at a point on the road centerline located at 39 degrees 56 minutes 03.94 seconds North Latitude and -111 degrees 11 minutes 59.02 seconds West Longitude, which can be converted to mapping accuracy State Plane Utah Central Zone NAD 83 feet coordinates of X = 1,724,613.7 feet and Y = 7,144,980.2 feet based on the US Survey Foot conversion.

This road may traverse:

Township 10 South Range 6 East, Section(s) 24,25,26,35,36, Salt Lake Base & Meridian

Township 11 South Range 6 East, Section(s) 1,12,13,25,35,36, Salt Lake Base & Meridian

Township 11 South Range 7 East, Section(s) 18,19,30, Salt Lake Base & Meridian